

A two-story white house with a dark roof and black window frames. A large, mature tree with green leaves is in the foreground, partially obscuring the house. To the left, a driveway with a dark door is visible. The house has a covered front porch with a dark door. The address "2433 TREVOR DR" is visible on the left side of the house. The text "GMT" is overlaid in a white box in the upper center of the image.

GMT

2433 Trevor Drive
Oakville

Welcome to 2403 Trevor Drive

This gorgeous home is ideally located in the popular Bronte neighborhood of south west Oakville. Known for its family appeal, parks, extensive walking trails and proximity to amenities make this pocket so appealing.

Bronte offers a small town vibe and relaxed feel being on the lake sporting marinas and boardwalk strolls for ice cream. Great shops, restaurants, schools and local transport make this neighborhood ideal!

The home offers thoughtfully curated renovations making this family home the perfect place to enjoy for many years. The entire home was recently and completely redesigned using the highest quality materials and finishes.

Great flow throughout the main level create spaces for family gatherings, entertaining or quiet rooms for relaxation. Perfect for larger families also with room and space for everyone's activities.

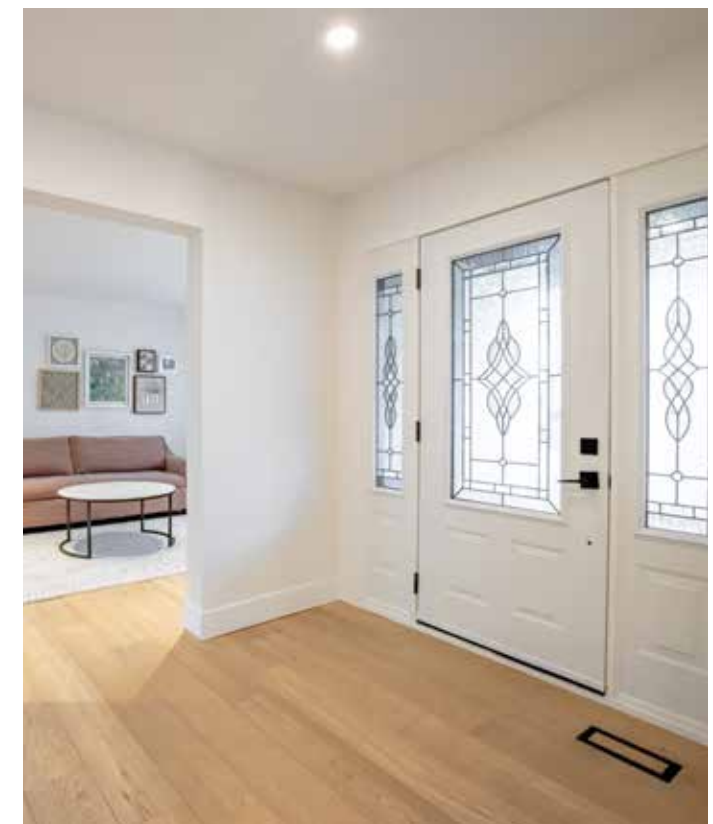
THE GOODALE MILLER TEAM

Listing Agents: Brad Miller, Kieran McCourt & Kathy Jopson



Property Highlights

BEDS	4
BATHS	3.1
LOT SIZE	60.64' x 100.48' x 60.64' x 100.33'
ABOVE GRADE	2,077 sq ft
TOTAL SQ FT	3,237 sq ft
TAXES	\$7,821 / 2025





Main Level

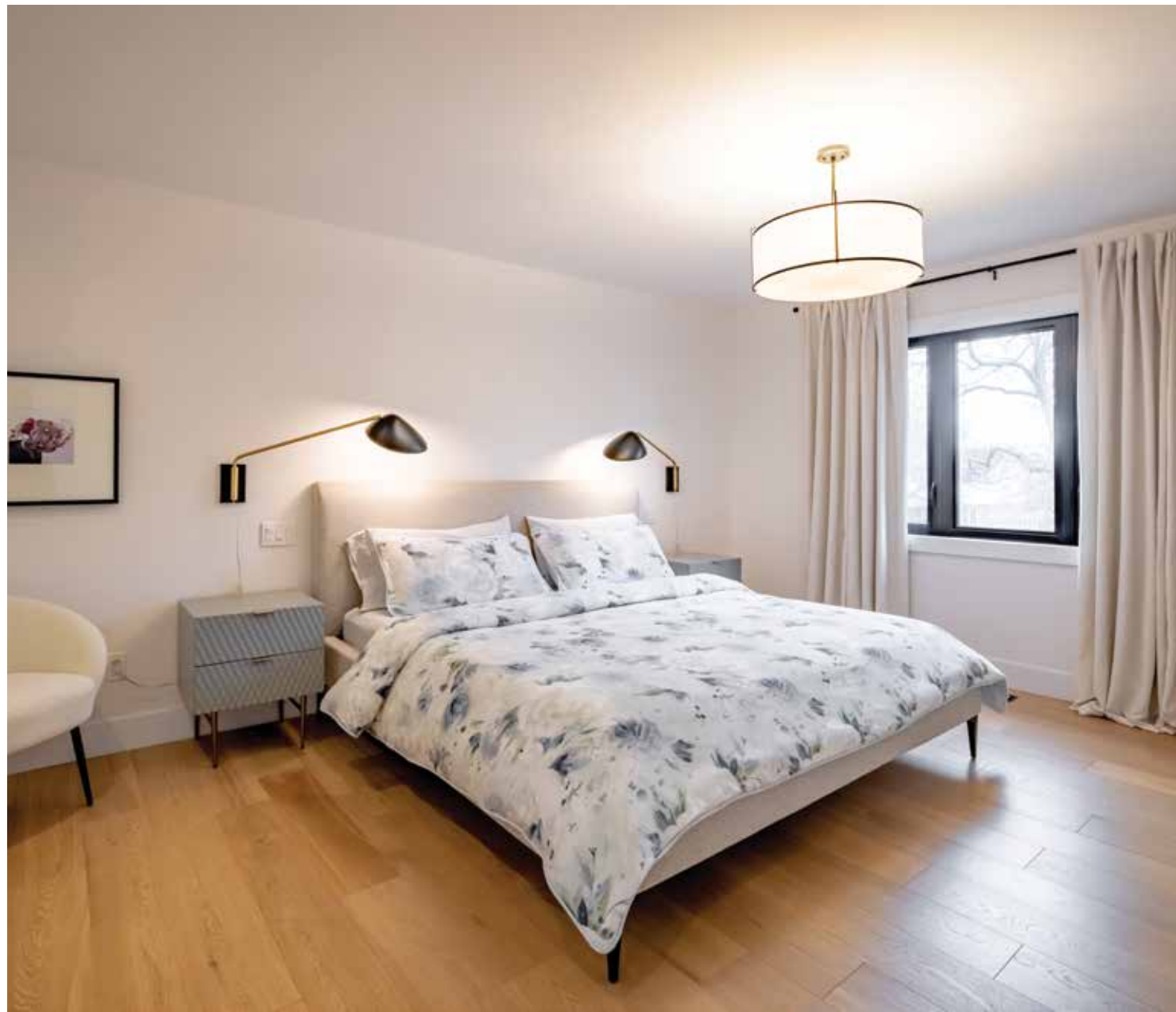
Stunning and bright, open concept layout with clean lines and quality finishes! Gourmet kitchen with Calcutta marble waterfall island and stunning custom cabinetry with top of the line appliances including KitchenAid 6 burner gas range, Bosch built-in oven, dishwasher and stainless-steel refrigerator. Sliding glass door leads to the oasis style backyard! Side hallway so convenient to access the barbecue for family gatherings but also boasts the bright powder room and convenient dog washing station.

Open concept dining room is generously sized and affords a view of the pool and leads to the coffee bar where you can place your desk at the wall of windows and its private view. The flow of the main level continues through the relaxed living room, perfect for entertaining. Quality materials such as the stunning white oak flooring which extends through all levels of the home.







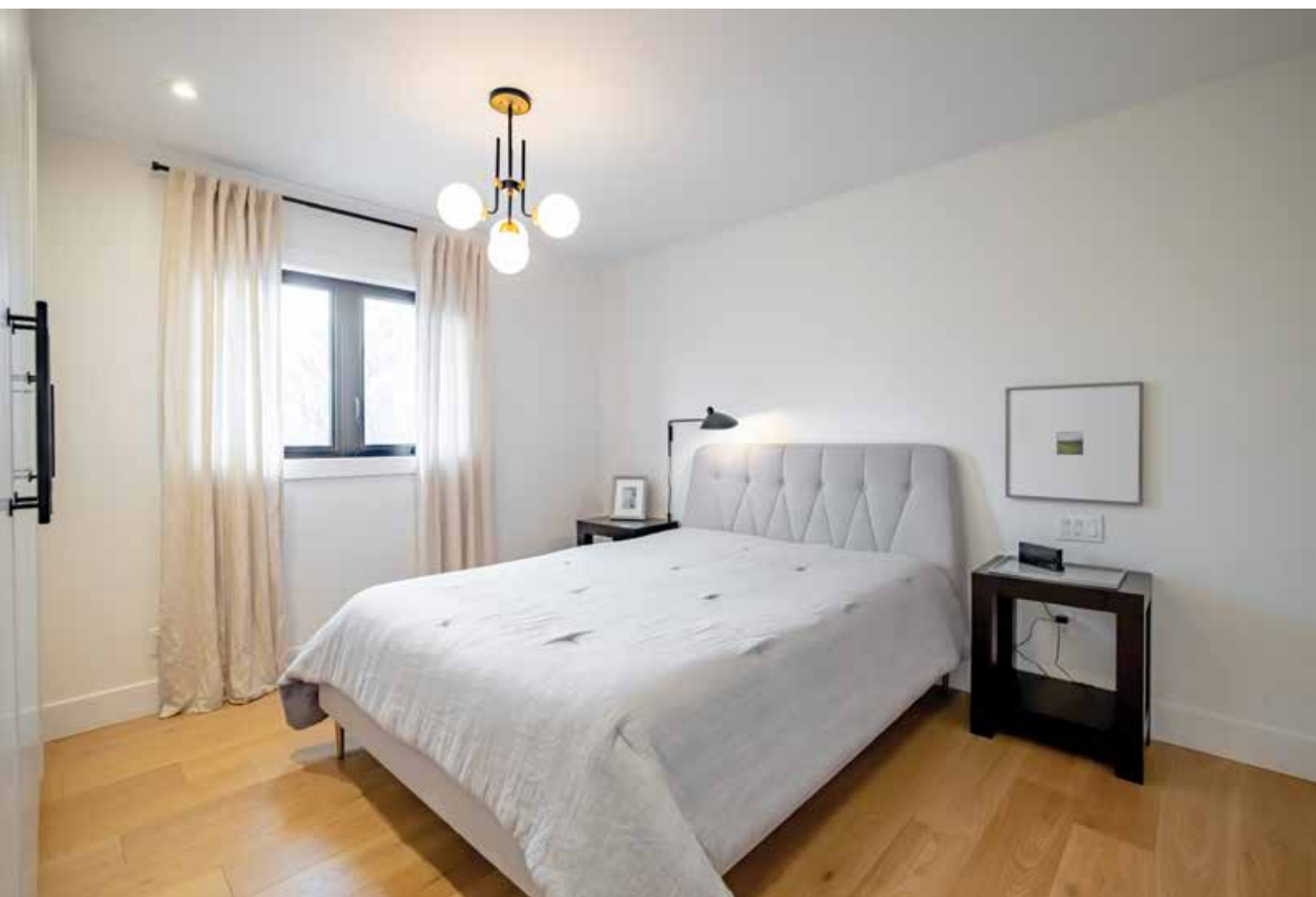


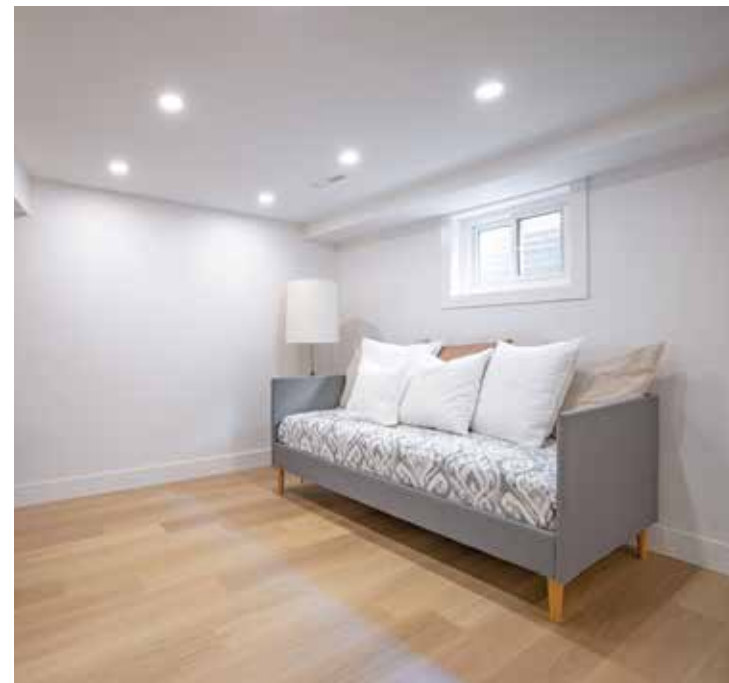
Second Level

Bright upper level accentuated by two skylights and glass halfwall along the staircase let in the natural light. Four generously sized bedrooms including the beautiful primary bedroom suite grace this level.

Thoughtful design choices highlight the natural wood and simple lines of the rooms. Large ensuite bathroom with double sinks and gleaming walk-in shower plus a large walk-in closet complete the primary bedroom wing of the home. A large four piece bathroom and laundry room complete this level.







Lower Level

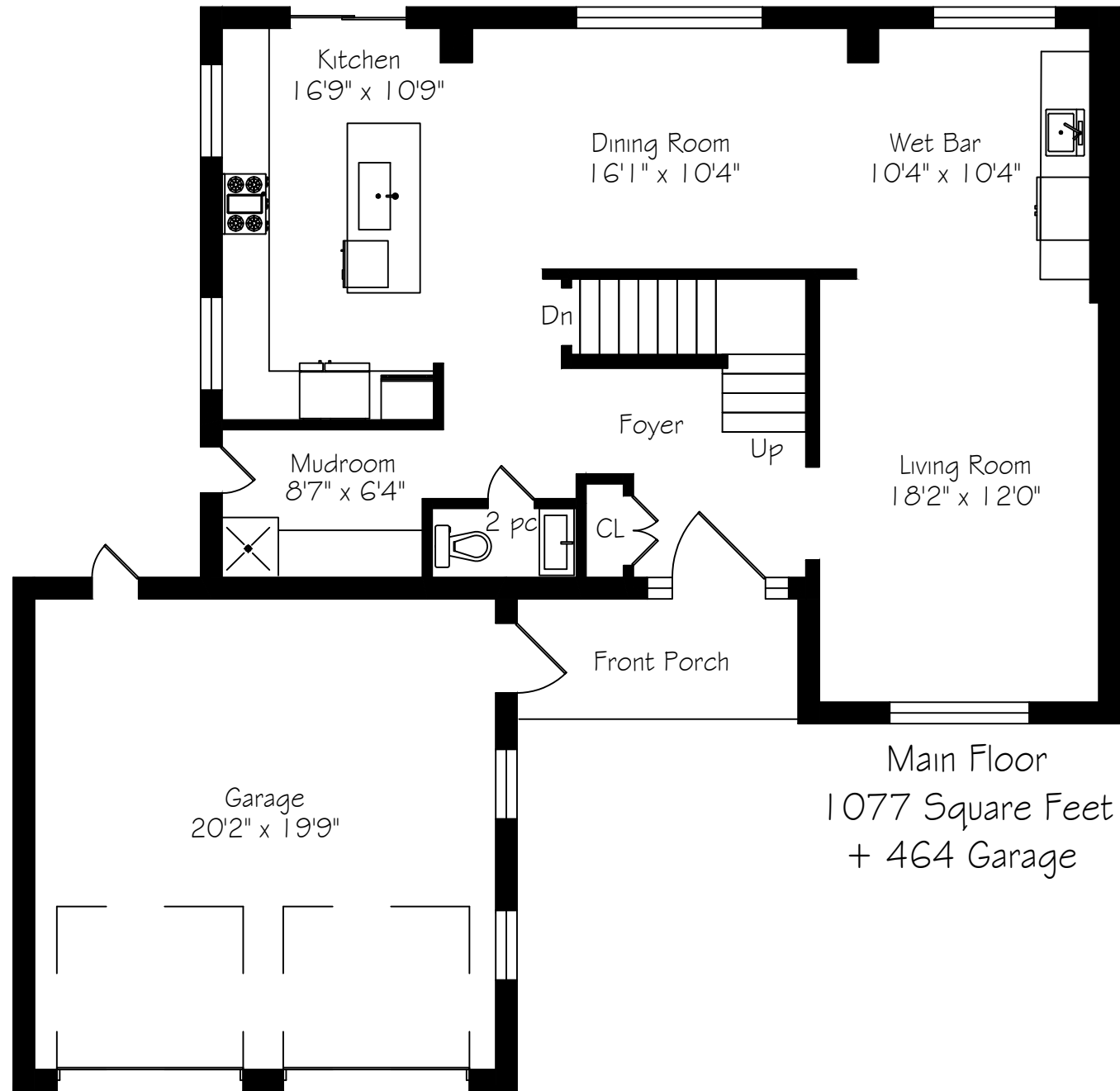
Created using the same level of quality, this level offers a games room, open recreation room, kitchenette that could accommodate extended family plus a den. A stunning three piece bathroom situated off of the family room that has the potential to become another bedroom if desired.



Backyard

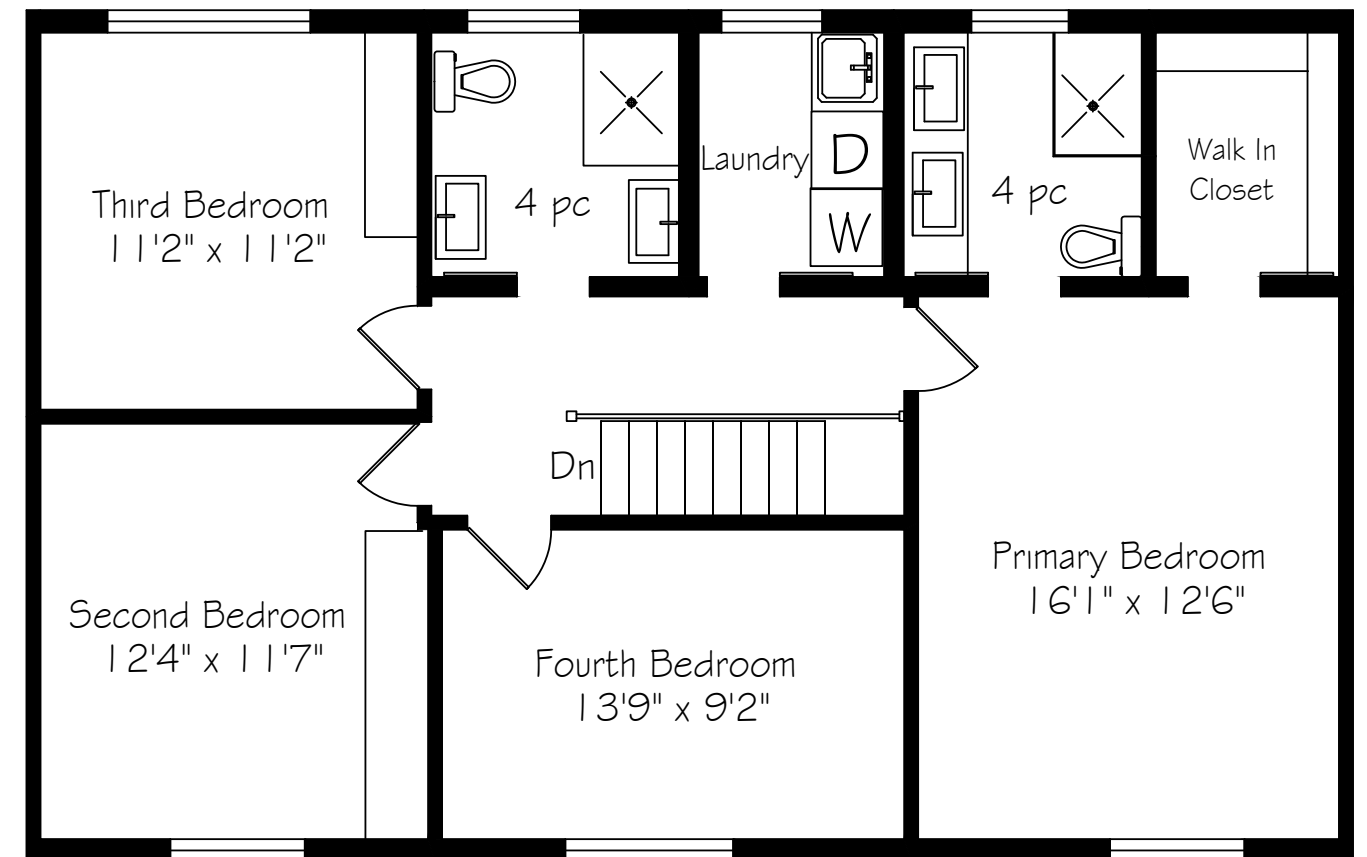
This private yard was designed with family living in mind. The heated pool, patio seating areas and lovely gardens are picture perfect. A few steps from the sliding doors of the kitchen and you're at the barbecue. Admire the entire rear yard from the wall of windows across the rear of the home. Paradise!

Main Level Floor Plan



*Room sizes should be considered approximate since measurements are subject to certification.

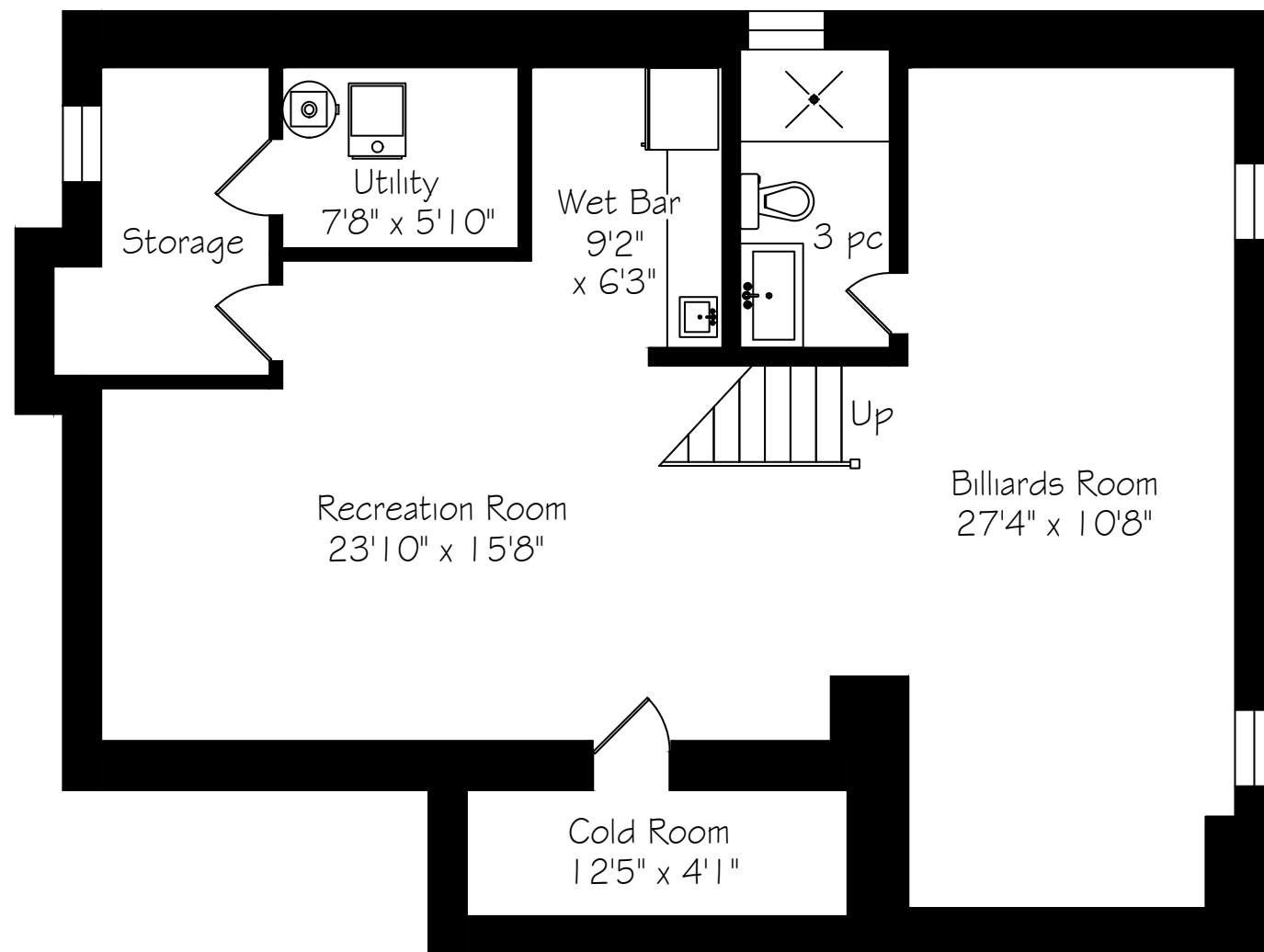
Second Level Floor Plan



Second Floor
1000 Square Feet

*Room sizes should be considered approximate since measurements are subject to certification.

Lower Level Floor Plan



Lower Level
1160 Square Feet



About The Neighbourhood

Bronte is a vibrant waterfront community where village charm meets lakeside living. Centred around Bronte Harbour and its marina, the neighbourhood offers an easygoing lifestyle with boutique shops, local cafés and restaurants that draw both residents and visitors year-round. The lakefront parks, trails, and open green spaces give Bronte its relaxed character, while still keeping it well connected to the rest of Oakville and the GTA.

Life in Bronte feels warm and inviting. Mornings might begin with a stroll along the harbour, afternoons can be spent browsing village shops or enjoying the waterfront trails and evenings often lead to dinner overlooking the lake. At sunset, residents and visitors alike gather along Bronte Harbour to watch the boats return, a ritual that captures the spirit of this lively lakeside village.



GoodaleMillerTeam
CENTURY 21 MILLER REAL ESTATE LTD. BROKERAGE

905.338.2121 | GoodaleMillerTeam.com